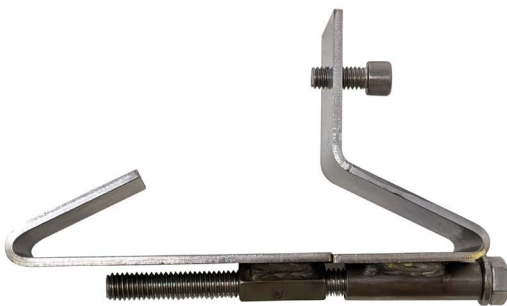




## Single Sided Rail Clip (Optical Survey Prism not included)



### SKU: SV-RC

The Rail Clip is constructed of a two-piece stainless steel design with a single Hex bolt to make rail mounting easy. The "L-Bar" mounts to the Rail Clip using a single Hex Socket screw into a threaded hole, so no nuts are required.

### FEATURES

- **Material: 316 SS**
- **Rail mounting Bolt: 316SS Hex head 3/8" x 5"**
- **L-Bar mounting screw: SS Hex socket 5/16"**
- **Rail Clip Length Range: 5 3/4" to 7 1/2"**